

RIVESTIMENTI

Gli articoli illustrati possono essere soggetti a variazioni

MODRONE FABRIC



400



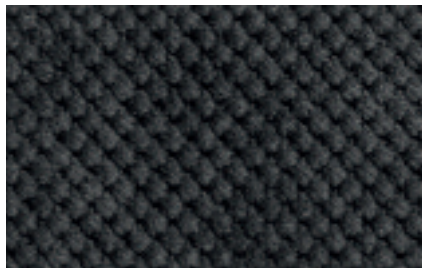
405



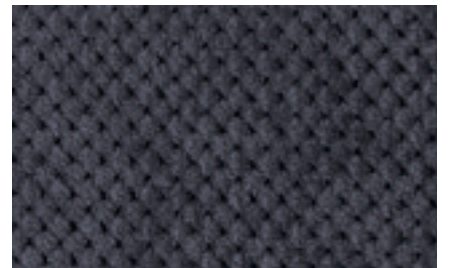
001



100



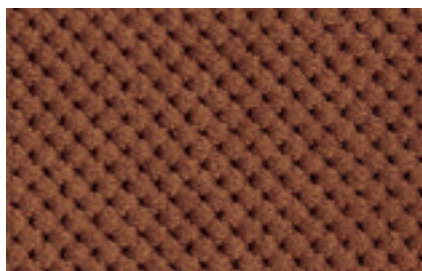
603



200



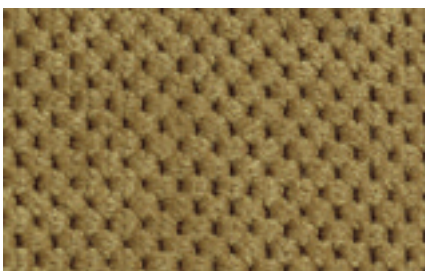
401



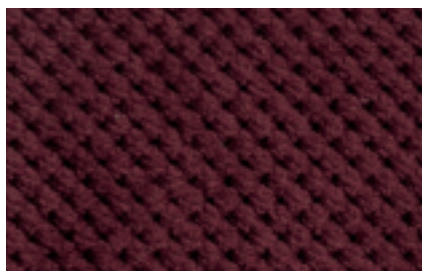
301



101



502



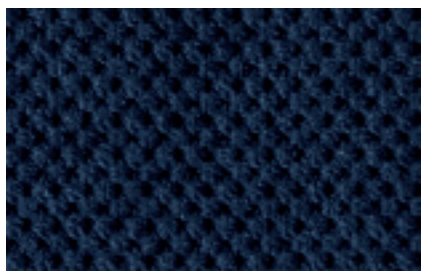
400



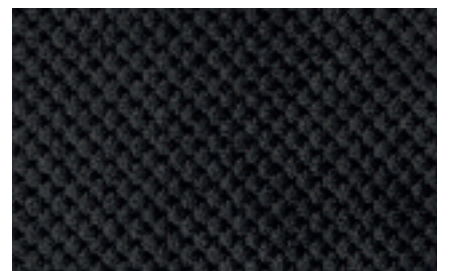
200



803



705



601

MODRONE

trattamento
nanotecnologia

IDROREPELLENTE
IRRESTRINGIBILE

SMACCHIABILE

LAVABILE IN LAVATRICE

RESISTENTE ALLE MACCHIE ACQUOSE E OLEOSE

Modrone è un tessuto unico ed innovativo per la praticità, la facile manutenzione, l'aspetto gradevole, i colori luminosi di tendenza.

Lo speciale trattamento che nasce dalla nano-tecnologia di nuova generazione rende il tessuto traspirante, idro ed olio repellente, cioè impedisce ai liquidi di penetrare all'interno del tessuto e quindi consente all'imbottitura di rimanere asciutta garantendo così la massima igiene.

Inoltre tutte queste caratteristiche rimangono inalterate.

Modrone è un tessuto che per la sua versatilità, offre soluzioni attente alle esigenze del vivere contemporaneo garantendo un perfetto equilibrio tra estetica ed efficacia, confort e performance, igiene e sicurezza.

Modrone is a unique and innovative fabric for its practicality, easy care, pleasurable look and bright and trendy colours. The special treatment which comes from new generation nano-technology makes Modrone breathable, hydro and oil repellent, which prevents liquids from penetrating inside the tissue and therefore allows the upholstery to stay dry, thus ensuring maximum hygiene.

Moreover all these features remain unchanged.

Modrone is a fabric which thanks to its versatility offers solutions focusing on the needs of contemporary life, ensuring a perfect balance between aesthetics and efficiency, comfort and performance, hygiene and safety.

Composizione : 90%PL 8%PA 2%CO

Composition :

Altezza : 140 cm

Width :

Peso : 357 gr/mq \pm 4%

Weight :

Restistenza all'abrasione >30.000 giri/rubs

Abrasion resistance (Martindale)

Punto finale n° cicli End point (ISO 12947-2)

Resistenza al Pilling 4/5

Pilling Resistance (ISO 12945-2)

Solidità del colore allo sfregamento: A SECCO / DRY 4/5

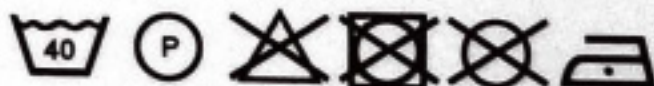
Colourfastness (ISO 105-X12) A UMIDO / WET 4/5

Solidità delle tinte alla luce : 4/5

Resistance to light : (ISO 105-B02)

Norme di manutenzione:

Cleaning: (ISO 3758)



Cuoio rigenerato / regenerated leather



bianco / white



nero / black



avorio / ivory



rosso / red



fumo / smoke



testa di moro / dark brown



beige



blu / blue



ghiaccio / ice



terracotta / brick



naturale / natural



vinaccia / dark red

Ecopelle / Eco-leather



bianco / white



nero / black



avorio / ivory

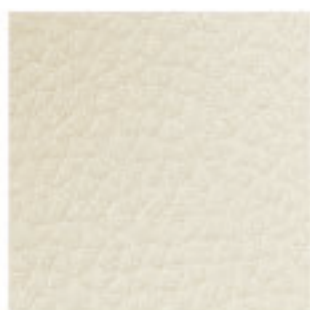


rosso / red

Ecopelle / eco-leather



1



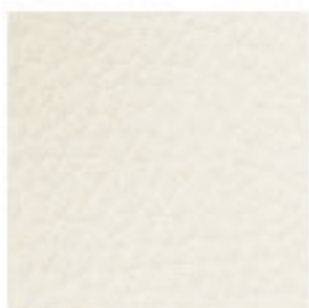
6



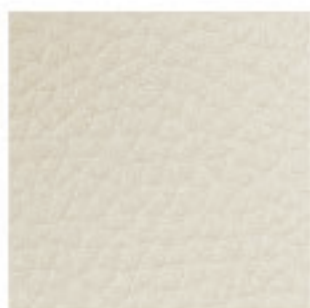
11



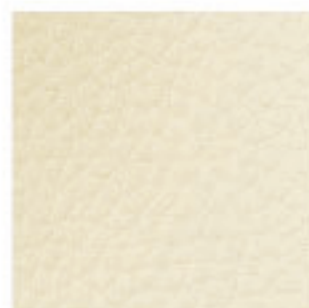
16



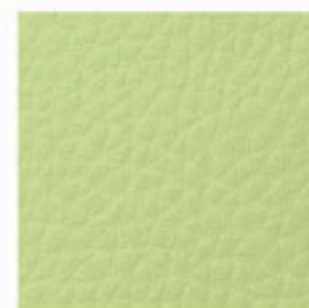
2



7



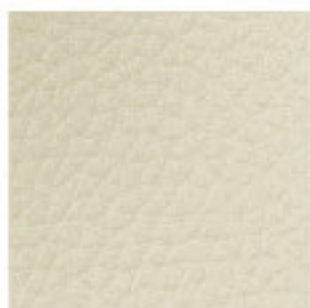
12



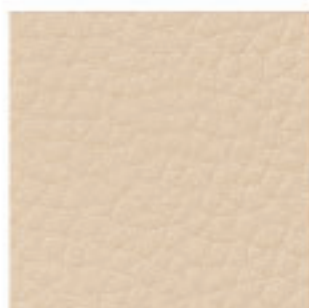
17



3



8



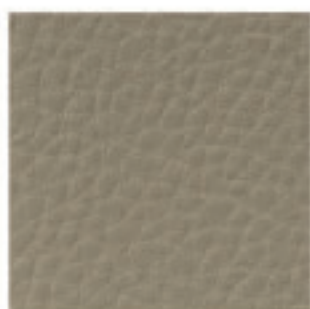
13



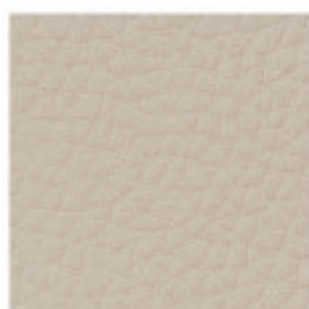
18



4



9



14



19



5



10



15



20



21



26



31



22



27



32



23



28



33



24



29



34



25



30



35